



Meridian Place, E14 9FF

Located moments from Canary Wharf financial district and a plethora of local amenities is this modern and spacious two bedroom two bathroom ground floor apartment. The property boasts a bright and airy living room, a contemporary kitchen, two modern bathrooms and two generous double bedrooms (one of which en-suite) with ample amount of storage space. Onsite benefits include a private allocated parking space as well as a plethora of restaurants, bars and shops nearby. The property is fully furnished.

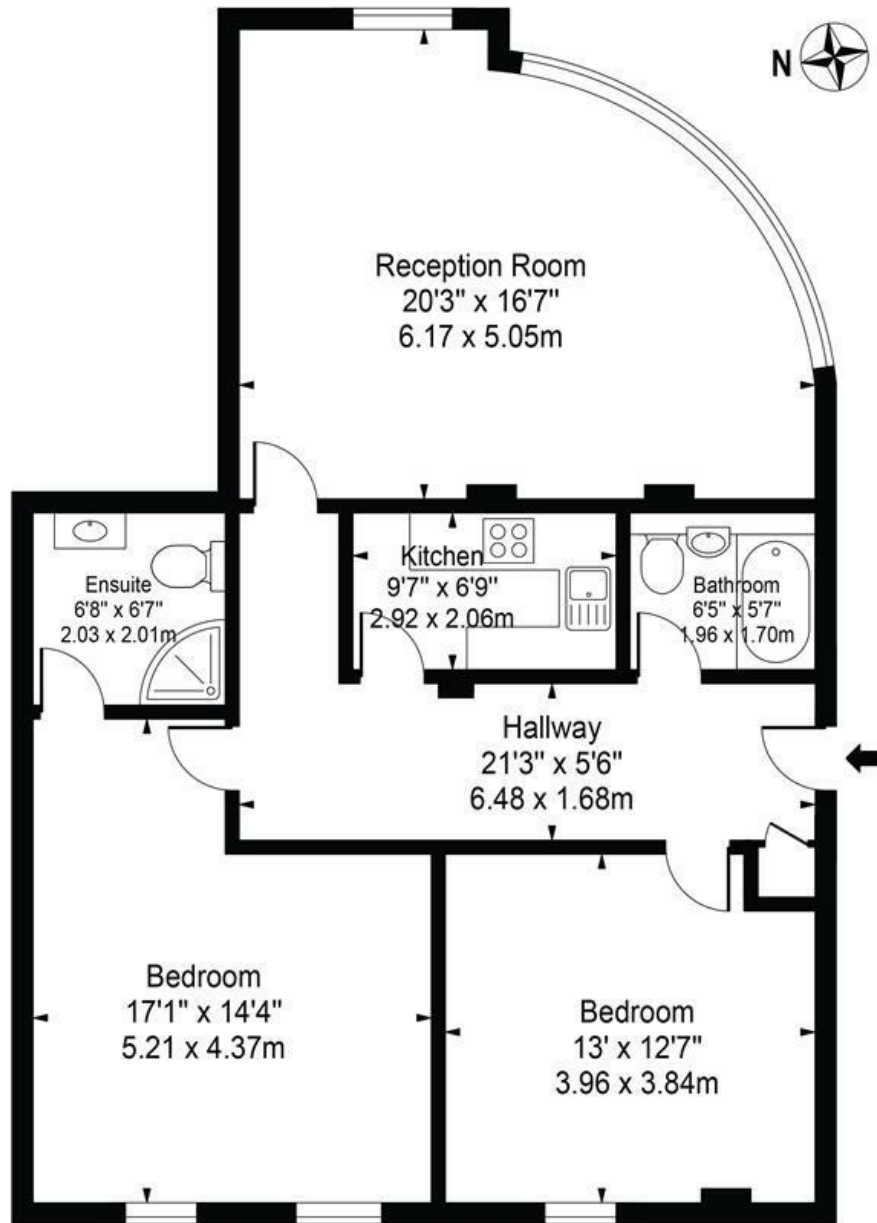
- Generous Two Bedroom Apartment
- Moments from South Quay Station
- Two Bathrooms
- Separate Kitchen
- Secure Parking Space
- Day Time Concierge

Alex & Matteo
ESTATE AGENTS

£1,800

Meridian Place

Approx. Gross Internal Area 968 Sq Ft - 89.93 Sq M



Ground Floor

For Illustration Purposes Only - Not To Scale

This floor plan should be used as a general outline for guidance only and does not constitute in whole or in part an offer or contract. Any intending purchaser or lessee should satisfy themselves by inspection, searches, enquiries and full survey as to the correctness of each statement. Any areas, measurements or distances quoted are approximate and should not be used to value a property or be the basis of any sale or let.

Energy Efficiency Rating		
	Current	Potential
Very energy efficient - lower running costs		
(92 plus) A		
(81-91) B		
(69-80) C	72	72
(55-68) D		
(39-54) E		
(21-38) F		
(1-20) G		
Not energy efficient - higher running costs		
England & Wales		
EU Directive 2002/91/EC		